

Be inspired by our magnificent Tararua Ranges every day for a whole year

with this unique, limited edition, large scale, premium quality, locally printed calendar

produced by Wellington-based trumper, occasional climber
and photographer Peter Laurensen



Open, on-wall dimensions 42cm wide by 60cm high, weight 0.44 kg

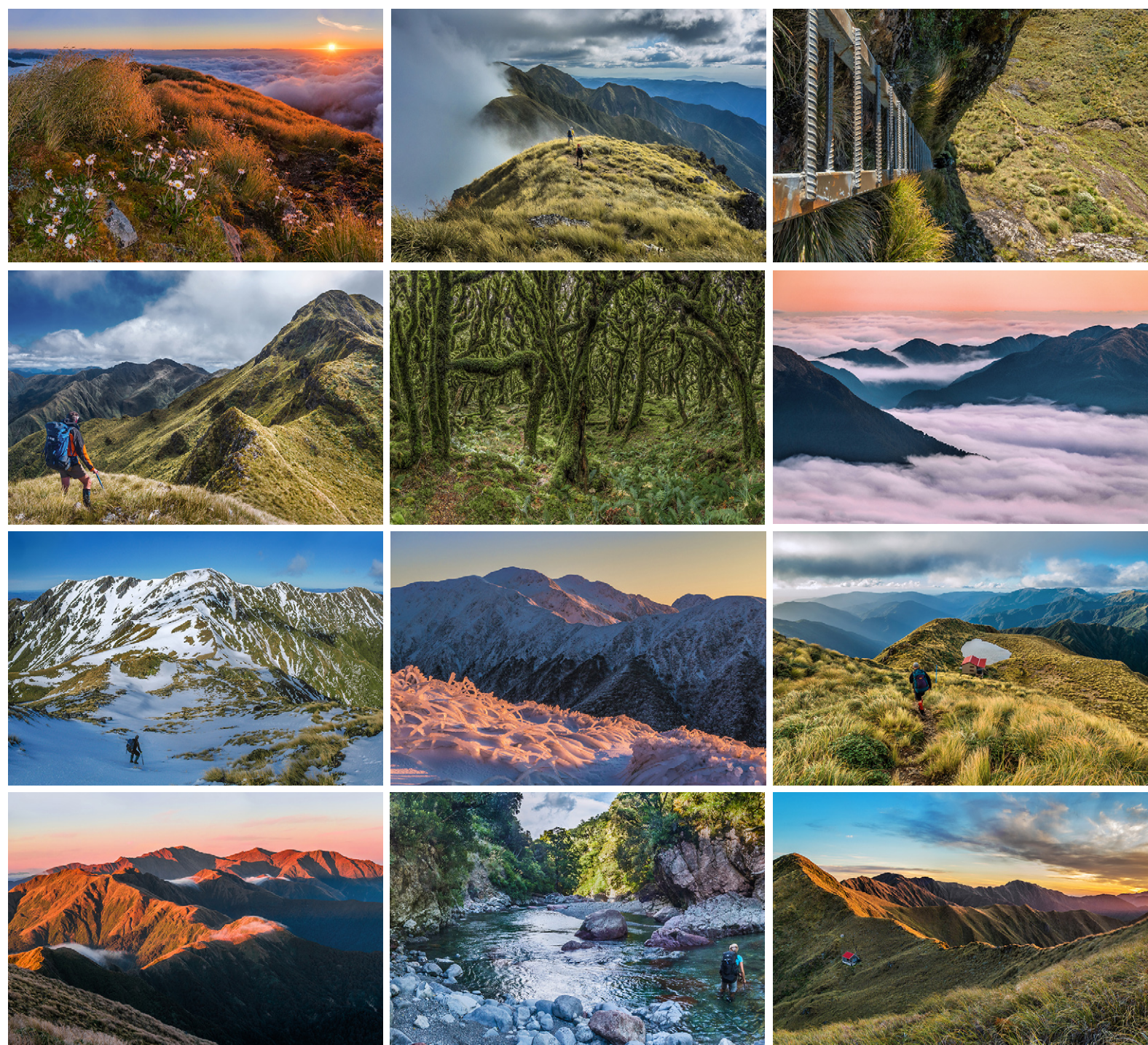
NZ\$29 (incl gst, excl postage)

Postage within New Zealand is via standard NZ Postal service. For orders of 1 to 4 calendars, including a water proof envelope, this incurs a flat \$12 charge

If in Wellington, for no extra charge you can collect your calendar(s)
by calling/texting 021 446 725 to arrange details
email: occasionalclimber@gmail.com

Last orders and payment 20 August please, to permit finalisation of print quantity
Payment via internet banking to 15-3971-0056131-10. State 'calendar' in the reference field

Image selection, drawing on many trips spanning decades, aims to capture the essence of Tararua – tops and tussock, goblin forest, rivers, tarns, trampers, huts, signage, seasons, weather, sunrise and sunset



During 2023, each month enjoy a full page main image plus a generously sized, full width panoramic image at the base of the day/date page

The day/date page allows plenty of space to write day notes and includes a next month preview thumb

The next two pages show open, on-wall spreads for August and December



The Three Kings (centre), Mitre (at 1,571m the highest peak in the Taranaki Ranges, right) and Baldy Ridge, viewed from near Jumbo Hut (1,220m) at dawn

August 2023

Monday	Tuesday	Wednesday	Thursday	Friday	Saturday	Sunday
<div>September 2023</div> <div>Mon Tue Wed Thu Fri Sat Sun</div> <div>1 2 3</div> <div>4 5 6 7 8 9 10</div> <div>11 12 13 14 15 16 17</div> <div>18 19 20 21 22 23 24</div> <div>25 26 27 28 29 30</div>	1	2	3	4	5	6
7	8	9	10	11	12	13
14	15	16	17	18	19	20
21	22	23	24	25	26	27
28	29	30	31	<div>A winter view from left, of Holdsworth, the main range in the distance, Jumbo (left of centre), Angle Knob, McGregor, Broken Axe Pinnacles, and the Three Kings</div>		



Sunset view south from above Tarn Ridge Hut (1,360m), to Adkin, the Three Kings, Broken Axe Pinnacles and McGregor, with Dorset Ridge middle foreground

December 2023

Monday							Tuesday							Wednesday							Thursday							Friday							Saturday							Sunday																											
<div>January 2024</div> <table><tr><td>Mon</td><td>Tue</td><td>Wed</td><td>Thu</td><td>Fri</td><td>Sat</td><td>Sun</td></tr><tr><td>1</td><td>2</td><td>3</td><td>4</td><td>5</td><td>6</td><td>7</td></tr><tr><td>8</td><td>9</td><td>10</td><td>11</td><td>12</td><td>13</td><td>14</td></tr><tr><td>15</td><td>16</td><td>17</td><td>18</td><td>19</td><td>20</td><td>21</td></tr><tr><td>22</td><td>23</td><td>24</td><td>25</td><td>26</td><td>27</td><td>28</td></tr><tr><td>29</td><td>30</td><td>31</td><td></td><td></td><td></td><td></td></tr></table>																												Mon	Tue	Wed	Thu	Fri	Sat	Sun	1	2	3	4	5	6	7	8	9	10	11	12	13	14	15	16	17	18	19	20	21	22	23	24	25	26	27	28	29	30	31				
Mon	Tue	Wed	Thu	Fri	Sat	Sun																																																															
1	2	3	4	5	6	7																																																															
8	9	10	11	12	13	14																																																															
15	16	17	18	19	20	21																																																															
22	23	24	25	26	27	28																																																															
29	30	31																																																																			
4							5							6							7							8							9							10																											
Westland Anniversary Day																																																																					
11							12							13							14							15							16							17																											
18							19							20							21							22							23							24																											
25							26							27							28							29							30							31																											
Christmas Day							Boxing Day																																			New Year's Eve																											